



SPECIAL EDITION

Vauxhall

CALIBRA SE8



VAUXHALL

Keep A Cool Head



Since its launch, the Calibra with its alluring lines, seductively comfortable interior and hot blooded performance has turned heads and captured hearts.

Now, with the Calibra SE8, the tradition continues unabated.

The rich lustre of deep, Magnetic Blue paintwork makes the SE8 a real draw. Inside, lest you should get too hot and bothered, cool Lens cloth trim is complemented by full CFC-free air-conditioning.

When you really want to turn up the heat, there's Vauxhall's brilliant and lusty 2.0i 16-valve ECOTEC-4 engine with a variable intake manifold for even greater torque.

Add to this potent mix F-line alloy wheels and a rear spoiler with integrated brake light and you have something in your life about which both your head and your heart can be in total harmony.





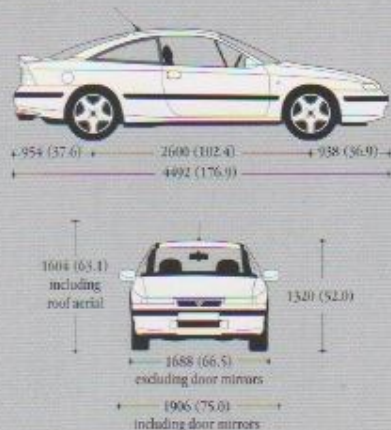


Automatic transmission is optional at extra cost.



EXTERIOR DIMENSIONS

Millimetres (inches)



Every effort has been made to ensure that the contents of this publication were accurate and up-to-date at the time of going to press (March 1997). However, with Vauxhall's policy of continuous product improvement, the company reserves the right to change specifications and make modifications to the vehicles described and illustrated at any time. Vauxhall cars are equipped with components manufactured by various General Motors operating units and outside suppliers. Any alterations affecting the description and illustrations in this publication will be notified to Vauxhall dealers at the earliest opportunity. Please consult your Vauxhall dealer for the latest information. The colours reproduced may vary slightly from the actual paint colour or material due to the limitations of the printing process. It should be noted that Vauxhall dealers are not the agents of Vauxhall Motors Limited and are not authorized to bind the company by any specific or implied undertaking or representation.

Published March 1997 (GH)

V10484

Vauxhall Motors Limited, Luton LU1 3YT

DEALER



VAUXHALL



OFFICIAL SPONSOR

SPECIFICATIONS

SAFETY

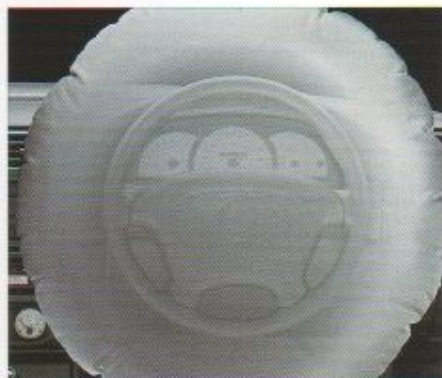
- Electronic anti-lock braking system (ABS)
- Driver's full-size airbag
- Twin side impact door bars
- Front body-lock seatbelt pretensioner system
- Height adjustable inertia reel front seatbelts
- Two inertia reel rear seatbelts
- Reinforced passenger safety cell
- Deformation zones front and rear
- Anti-submerging ramps in all seats
- Fully-adjustable front seat head restraints

INTERIOR

- Full air-conditioning (CFC-free) including glovebox
- SC 303 stereo radio/cassette player with removable display, six speakers and security code protection
- Radio data system (RDS EON) with Traffic Programme
- Console mounted cassette storage box
- Five-speed close-ratio manual gearbox (four-speed automatic transmission optional at extra cost)
- Leather-covered four-spoke steering wheel
- Sports front seats with driver's seat height adjustment
- Rev counter, oil pressure gauge and voltmeter
- Check control warning panel
- Digital dual information display featuring clock and outside air temperature
- Interior pollen filter
- Courtesy light with integral map reading lights and delay cut-off
- 60/40 split-folding rear seat
- Illuminated glovebox and load area

EXTERIOR

- Four 6j x 15 five-spoke F-line alloy wheels with locking wheel bolts and steel space-saver spare wheel
- 205/55 R 15 ultra-low profile tyres
- Body colour rear spoiler with integral LED centre brake light
- Power assisted steering
- Ultrasonic security alarm system with power siren
- Electronic engine deadlock immobiliser
- Central locking (doors, tailgate, fuel flap) with security deadlock
- Electrically operated front windows with safety autoreverse and one-touch facility
- Green tinted glass with windscreen shadeband
- Body side protection mouldings
- Twin electrically adjustable/heated door mirrors
- Body colour door mirrors and bumpers
- Gas pressure dampers
- Halogen double ellipsoid headlights
- Front halogen fog lights integrated into headlight units
- Electric headlight beam levelling
- Lights-on audible warning
- Heated rear window with automatic timed cut-off
- Intermittent rear window wash/wipe
- Roof mounted flexible rod aerial
- Sports exhaust tailpipe



Driver's full-size airbag.

ENGINE

2.0i 16v ECOTEC-4 Petrol (1998cc).
Max. power: 136PS (100kW) @ 5600rpm.
Max. torque: 188Nm (138.7 lb.ft.) @ 3200rpm.
Three-way closed-loop catalytic converter.

PERFORMANCE

	manual	automatic
Maximum speed:	133mph	133mph
Acceleration 0-60mph:	8.0 secs	10.0 secs
Acceleration 30-50mph (4th gear):	7.5 secs	-

INSURANCE GROUP

Group 14 as recommended by the Association of British Insurers.

FUEL ECONOMY

	manual	automatic
Simulated urban driving:	26.9 (10.5)	25.9 (10.9)
Constant 56mph (90km/h):	47.9 (5.9)	49.6 (5.7)
Constant 75mph (120km/h):	39.8 (7.1)	40.4 (7.0)

New method - EC Directive 95/116/EC

	manual	automatic
Urban driving:	22.6 (12.5)	19.5 (14.5)
Extra urban driving:	42.2 (6.7)	40.4 (7.0)
Combined figure:	32.1 (8.8)	28.8 (9.8)
CO ₂ emissions (g/km):	208	231

FUEL CAPACITY

63 litres (14.0 gallons).

BODY

All steel body with six-year body panel anti-perforation warranty. Aerodynamic drag co-efficient: Cd 0.29.

WEIGHTS

	manual	automatic
Kerbweight:	1280	1310
Gross vehicle weight:	1700	1730
Maximum towing weight:	1350	1350

LOAD CAPACITIES

	VIA method - litres (cu. ft.)
Rear seat up - under load cover:	300 (10.6)
Rear seat down - to glass line:	740 (26.1)
Rear seat down - to roof:	980 (34.6)

COLOUR AND TRIM

Calibra SEB is available in Magnetic Blue two-coat pearlescent exterior paint. Interior trim is Lens cloth in Anthracite. For an exterior colour illustration, please refer to the Vauxhall Car Colours brochure.

PRICES

Please consult your Vauxhall dealer for Calibra SEB price details.